

Take total control
of your network
infrastructure

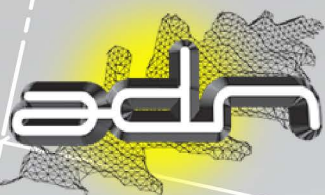


R3Web

software

documentation

Data
Voice
Images
Security



R3Web software helps to manage the cabling infrastructure of your low current networks, enabling you to manage buildings, data centers, a group of sites...



One tool for all networks

- Building and data center management
- Low current networks:
voice/ data/image/ security (and high current)
- Copper and optical cabling (LAN, MAN, WAN)

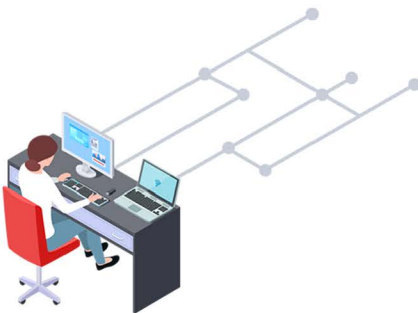
Mapping of passive and active elements of the network

- Bays and technical premises as well as their active and passive equipments (with their availability)
- Network endpoints (occupied and available sockets, end stations, servers, cameras, sensors, etc)



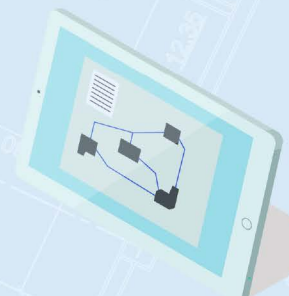
Decision support for network failures and upgrades

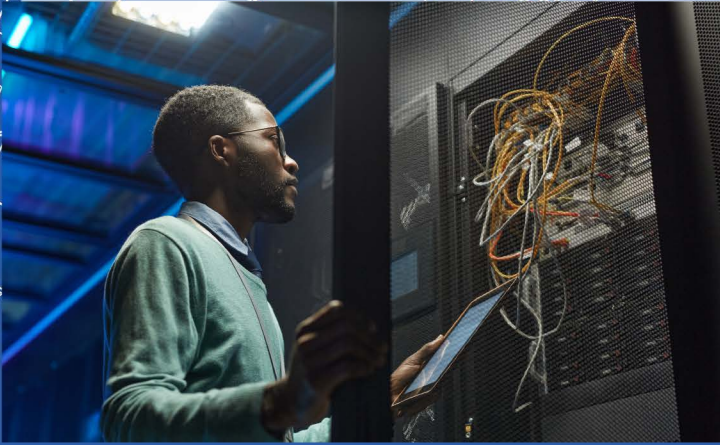
- Plans tasks (detailed work orders)
- Proposes new patching path between two ends (creation and modification)
- Simulate the future state of the network



Detail the paths between the network elements

- Paths between active equipment
- Paths between the active equipment and the network ends
- The paths are reliable, because they are synchronised with the network supervision





Accessible on PC/ tablet/ smartphone

Multi-user consultation and updating on the intranet, through a standard browser.

On PC and tablet, access for consultation and updating. On smartphone, consultation use.

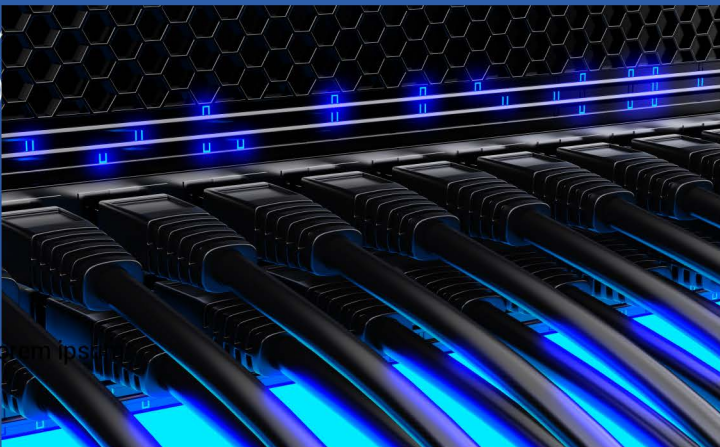
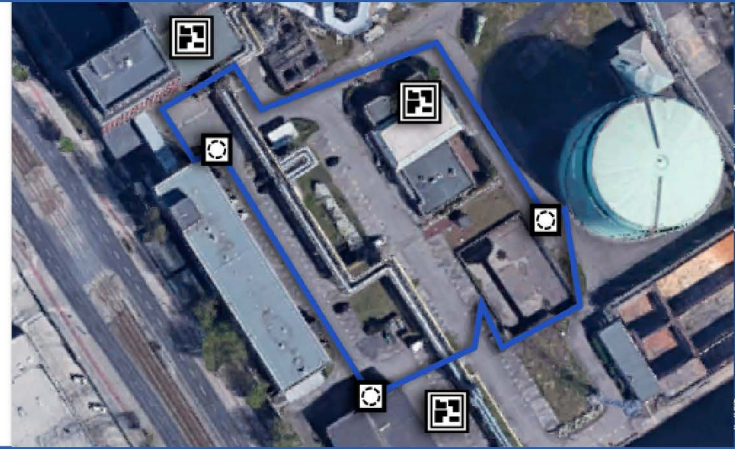
Global Vision

Cabling diagrams

(variable according to the type of network).

Cable routing on plans (cable trays inside buildings and details of the VRD).

Cable tray for each circuit, with details of the network elements.



Detailed view

Sites, buildings, levels, rooms, technical rooms, bays, trusses, active and passive equipment, copper and optical cables, cable trays, cable tests, patch cord, panels, sockets, end stations with their users, servers, networks, VLANs ...

Exclusive method of optimised on-site surveys

Discover our survey process, with fast and reliable data capture: barcode labels are affixed to passive and active equipment, as well as to each end of the patch panels (optical fibre or RJ45)





ADN offers services around R3Web: technical assistance, regular updates, additional on-site surveys, data integration, training, studies.

ADN SERVICES AROUND R3WEB SOFTWARE

Make your project a success !

ADN assists you in the project management, the supervision of a team in charge of the surveys, the site study, the data integration... and guarantees regular software updates, technical support and facilities management.



Technical assistance



Training courses



Data integration



Initial Study



Facilities management



Regular updates



R3Web has built on its success in France to expand internationally in Europe, North Africa and Middle East.

Land and air transport, port and airport management, research, armament, energy, oil & gas, steel industry, education, health, local authorities, banking sector, organisations linked to ministries, NGOs, telecom operators...



contact@adnfrance.com
+33561908160

www.adnfrance.com

